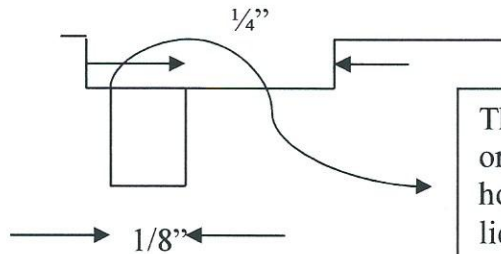


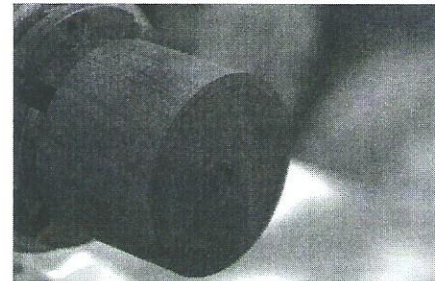
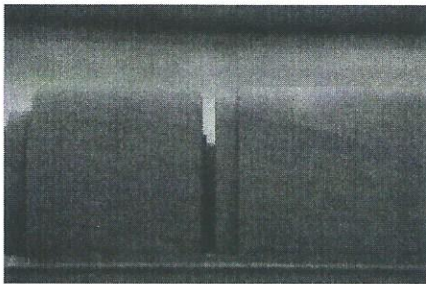
This will be a sliding fit joint so my design configuration makes the tendon on the top half. I do this so that when it is used any damage will occur on the bottom of the tendon which is not seen when the lid is on the box thus preserving the quality of the joining line of the two halves of the turning.



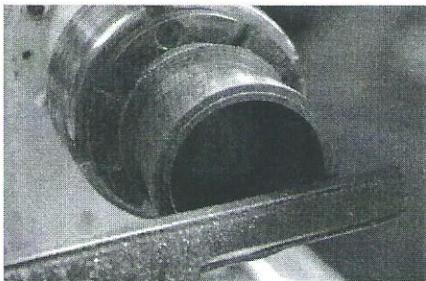
This will become the ridge or line that you will use to hollow the bottom so the lid fits the first time!

Next, you will part off the top. Hold on there,

not so fast, back up, don't touch that parting tool, this is the important part so pay attention! You will want to start the parting cut about 1/64" above the headstock side of the groove that you made and trued up earlier. When you get to the depth with your parting tool that you want to make some room, be sure to do this on the tailstock side of your parting cut. The idea is to leave a ridge 1/64" high on the half that will become the bottom. This ridge *is* the only mark on your ruler that counts and you don't even need a pencil to mark it, what a deal!



Ok hoss, here is where your turning skill will be put to the test, you will need to hollow the bottom of your project without making a funnel and stopping about 1/8" *before* you get to the ridge that you made during the last step. For end grain hollowing I prefer to use the only tool that works, a hook tool. Do what you have to do and make the hollow as good as you can, sand it out if you have to, but just *don't touch that ridge*.



For this step I use a sharp right hand skew scraper that is ground with an auxiliary cutting edge on the left which is ground at 90°. Make a pencil mark to mark the depth of the tendon on the lid, or just guess and make it a little deeper. Start removing wood from the

